



## Field Trials Conducted

### Details of field trials (Kharif, 2009)



No of on-farm trials Crop wise							
S.NO	District	Paddy	Cotton	Maize	Green Chilli	Brinjal	Soybean
1	Nizamabad	7	4	2	0	0	3
2	Medak	4	5	5	0	0	0
3	Karim nagar	5	5	5	0	0	0
4	Warangal	5	5	5	0	0	0
5	Khammam	5	5	4	0	0	0
6	Mahaboob Nagar	8	0	0	0	0	0
7	Nalgonda	0	1	0	0	0	0
8	Ranga Reddy	3	5	5	2	1	0
	<b>Total Trials</b>	<b>32</b>	<b>30</b>	<b>26</b>	<b>2</b>	<b>1</b>	<b>3</b>

### Details of field trials (Rabi, 2009)

District	Paddy	Suga rcane	Saff flower	Sun flower	Ground nut	Swe et oran ge	Mang o	Wat er mel on	onion	corn	chilli es	Vege tables
Ranga Reddy	7	1	1						1	-		4
Warangal	7	3					1	1	1			7
Khammam	16						2			1	6	
Karimnagar	7					2	3				1	1
Medak	5	1									2	1
Nalgonda	11											
Nizamabad-1	13			1						1	1	
Nizamabad-2	8	9										1
Mahboobnagar	2	1					4					
Total	76	15	1	1		2	10	1	2	2	10	14

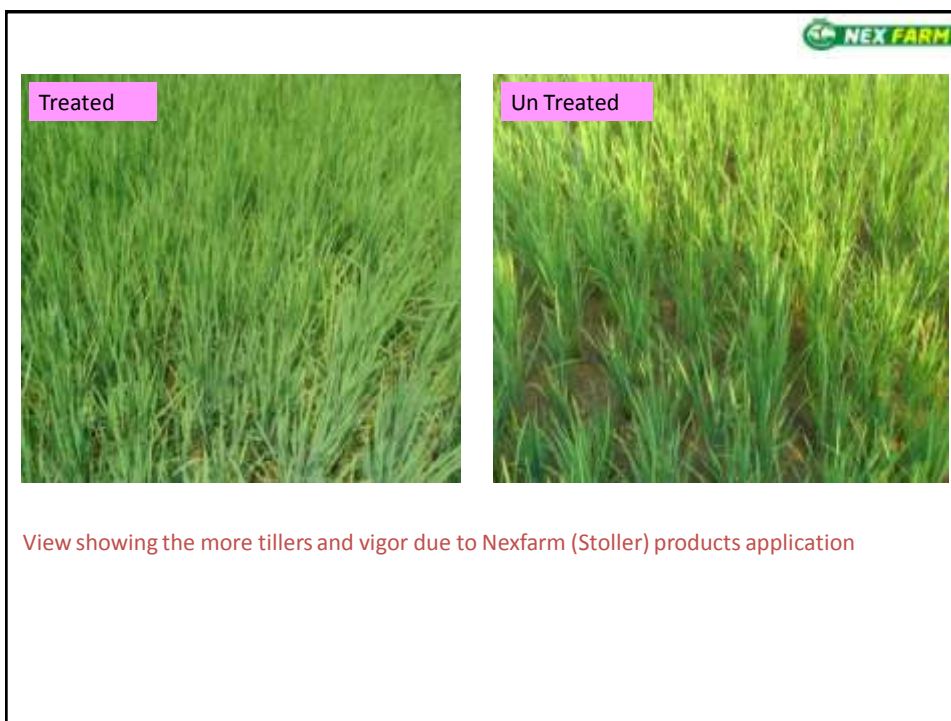


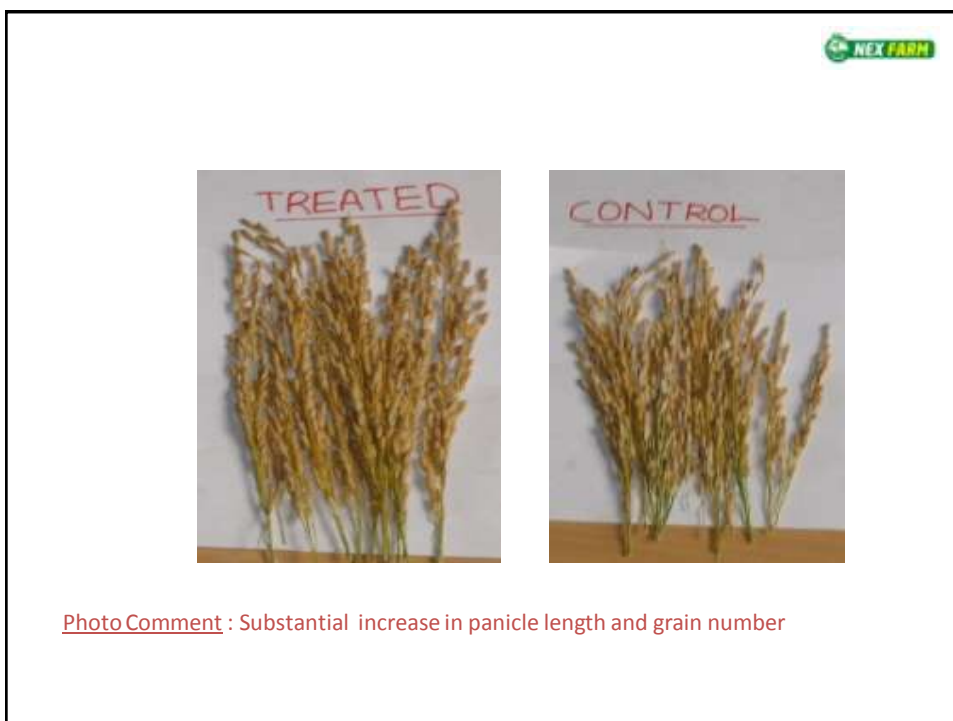
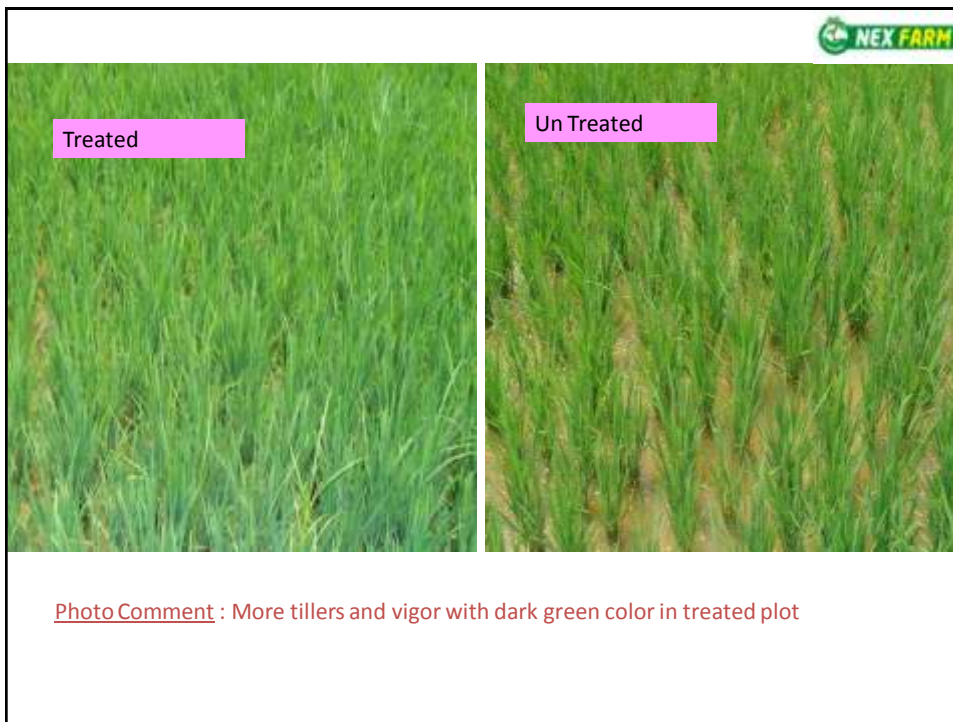
### Example Results

Farmer NO : P-01			
Farmer Name : N.Srihari			
Village : Maklur, Dist: Nizamabad			
Treated with : White Label Zinc + Nitro Plus +Sugar Mover			
Parameter	Treated	Control	Benefit
Plant ht. (cm)	95	85	10
Tillers / hill	37	25	12
Grain / head	220	180	40
1000 grain wt.(g)	15.1	14.8	0.3
Yield ( t / ac)	4.92	3.78	0.16
Addl. Cost ( Rs. / ac)	670		
Addl. Income(Rs./ ac)	1570		
C:B ratio	1:2.34		
<p><u>Comment:</u> Treatment effect reflected in tillering, grain per panicle and Chaffee grain resulting in slight increase in grain yield</p> <p><b>Note: C:B Ratio Stands for Cost:Benefit Ratio</b></p>			

Farmer NO : P-02			
Farmer Name : Vanka Srinivas Rao			
Village:Varni, Dist: Nizamabad			
Treated with : White Label Zinc + Nitro Plus			
Parameter	Treated	Control	Benefit
Plant ht. (cm)	90.8	83.2	7.6
Tillers / hill	30.2	27	3.2
Grain / head	210	185	14.8
1000 grain wt.(g)	15.4	14.9	0.5
Yield ( t / ac)	4.57	4.29	0.23
Addl. Cost ( Rs. / ac)	276		
Addl. Income(Rs./ ac)	2550		
C:B ratio	1:3.81		
<p><u>Comment :</u> Treatment with Nexfarm (Stoller) products resulted in increase in grain number and grain weight leading to increase in grain yield</p> <p><b>Note: C:B Ratio Stands for Cost:Benefit Ratio</b></p>			

Farmer NO : P-03 Farmer Name : V.Devaiah Village : Varni, Dist: Nizamabad			
Treated with : White Label Zinc + Nitro Plus +Sugar Mover			
Parameter	Treated	Control	Benefit
Plant ht. (cm)	95.00	85.00	10.00
Tillers / hill	35.20	31.40	3.80
Grain / head	199.00	184.00	15.00
1000 grain wt.(g)	16.30	15.10	1.20
Yield ( t / ac)	3.49	3.23	0.26
Addl. Cost ( Rs. / ac)	670		
Addl. Income(Rs./ ac)	3575		
C:B ratio	1:5.33		
<p><u>Comment</u> : Treatment with stoller products resulted in increase in grain number and grain weight leading to increase in grain yield</p> <p style="text-align: center;"><b>Note: C:B Ratio Stands for Cost:Benefit Ratio</b></p>			











Summery data table on paddy results									
Increase in treated plots over control plots									
Parameter	F-01	F-02	F-03	F-04	F-05	F-06	F-07	F-08	F-09
Av. plant height (cm)	10	7.6	10.0	7.0	4.7	4.2	10.0	10.0	10.0
Av.no. of tillers	12.0	3.20	3.80	4.20	0.80	--	20.0	2.0	5.0
Av. grain / panicle	40.0	24.8	14.7	37.9	-28.6	35.0	38.0	32.0	73.0
% of Chaffee	(4.10)	(2.30)	2.90	(0.70)	(1.50)	(8.20)	(9.80)	(1.40)	(1.00)
Wt of grain / panicle	0.66	0.47	0.40	(0.40)	0.40	1.0	0.20	0.5	1.10
1000 grain wt.(g)	0.30	0.50	1.20	0.50	0.30	1.90	0.80	0.90	0.0
Grain yield Kg/sq.m)	0.286	0.070	0.062	0.24	0.136	0.112	0.162	0.22	-
Grain yield t/ac	1.14	0.28	0.26	0.10	0.54	0.45	0.65	0.88	1.174
Addl. Cost (Rs./ac)	670	670	670	670	670	670	670	670	670
Addl. Income (Rs./ac)	1570	2550	3573	730	5490	3830	8430	8130	12350
C:B ratio	1:2.3	1:3.81	1:5.33	1:1.09	1:8.19	1:5.72	1:12.6	1:12.1	1:18.4
(PTO)									

Summery data table on paddy results										
Increase in treated plots over control plots										
Parameter	F-10	F-11	F-12	F-13	F-14	F-15	F-16	F-17	F-18	Mean
Av. plant height (cm)	14.0	5.0	9.0	10.0	4.0	5.1	10.1	5.0	4.0	7.76
Av.no. of tillers	5.0	0.0	7.9	10.0	5.80	5.5	2.0	2.8	2.0	5.41
Av. grain / panicle	63.0	25.0	88.0	(22.00)	22.0	8.20	21.8	89.7	57.8	34.5
% of Chaffee	(3.10)	(4.58)	(1.70)	(11.60)	(7.50)	(6.90)	(2.10)	(12.20)	(0.80)	(4.25)
Wt of grain / panicle	1.03	0.76	1.50	-0.22	0.41	0.28	0.45	1.20	0.52	0.57
1000 grain wt.(g)	1.10	1.1	1.20	1.8	-0.5	0.8	1.0	0.0	0.0	0.72
Grain yield Kg/sq.m)	.244	0.262	0.30	0.08	0.08	0.11	0.08	0.06	0.21	0.15
Grain yield t/ac	0.97	1.02	1.20	0.30	0.31	0.42	0.32	0.24	0.88	0.62
Addl. Cost (Rs./ac)	670	670	670	670	670	670	670	670	670	670
Addl. Income (Rs./ac)	12910	9530	7590	2330	3670	3530	2530	2690	9130	5587
C:B ratio	1:19.3	1:14.2	1:11.3	1:3.48	1:5.48	1:5.27	1:3.78	1:4.01	1:13.6	1:8.33

**Comment :** All the yield parameters: tillers, grain per panicle, grain weight are positively influenced while Chaffee grain decreased by Stoller products leading to an average increase of 620 kg grain yield per acre in paddy. Yield levels across farmers was not consistent because of variable rains and soil fertility status.

CBR variation was partially due to price levels of paddy varieties.



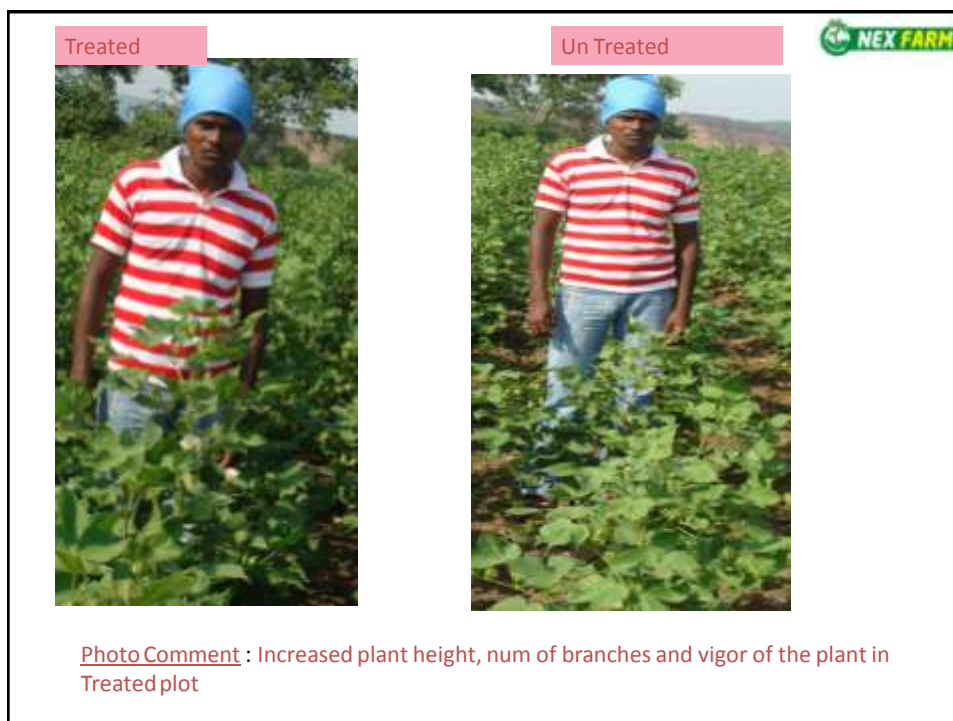




Farmer No:001			
Farmer Name:Bigada Madhava Rao			
Village:Sadashiv nagar, Dist.: Nizamabad, A.P., India			
Treated with: Nitroplus and Sugar Mover (Only one harvest)			
Parameter	Treated	Control	Benefit
Av. plant height (cm)	120.4	111.3	9.1
Av.no. of branches	23	19	4
Av. Bolls picked / plant	12.3	9	3.3
Av.Wt./boll ( g)	4.3	4.2	0.1
Av. Maximum Boll wt. ( g)	8.4	7.6	0.8
Cotton Yield(Kg /10sq.m )	0.638	0.5	0.138
Cotton Yield( kg / ac )	255.2	200	55.2
Assumed 4 harveststotal yield ( kg / ac )	1020.8	800	220.8
Gross income(Rs./ac)@ Rs.2800 / quintal	28582	22400	6182
Addl. Input cost( Rs./ac )	1370	0	1370
Net income ( Rs./ac )	27212	22400	4812
C:B Ratio	--	---	1:3.51
<u>Comment</u> : Plant height, number of branches, number of bolls and boll weight positively influenced leading to increased in seed cotton yield			



Farmer No : 002, Name : Rekula Jaipal Reddy Village: Saidha poor, Dist.: Karim Nagar, A.P., India Treated with: Nitroplus and Sugar Mover (Only one harvest)			
Parameter	Treated	Control	Benefit
Av. plant height (cm)	112	100	12
Av.no. of branches	17.1	12	5.1
Av. Bolls picked / plant	10.2	7.3	2.9
Av.Wt./boll ( g)	5.3	5.7	(0.40)
Av. Maximum Boll wt. ( g)	8.9	9.04	(0.14)
Cotton Yield(Kg /10sq.m )	0.625	0.5	0.125
Cotton Yield( kg / ac )	250	200	50
Assumed 4 harveststotal yield ( kg / ac )	1000	800	200
Gross income(Rs./ac)@ Rs.2800 / q	28000	22400	5600
Addl. Input cost ( Rs./ac )	1370	--	1370
Net income ( Rs./ac )	26630	22400	4230
C:B Ratio	--	--	1:3.09
<u>Comment:</u> Treatment effect reflected in plant height, branching and number of bolls leading to increase in seed cotton			



**Summary table showing the benefit of stoller products on cotton  
(Results Up to 30th Nov. 2009).**

Parameter	Farmer-1	Farmer-2	Farmer-3	Farmer-4	Farmer-5	Mean
Av. plant height (cm)	9.1	12	23.1	6.9	12.2	12.66
Av.no. of branches	4	5.1	2.7	11.3	4.2	5.46
Av. Bolls picked / plant	3.3	2.9	4.1	1.2	4.1	3.12
Av. wt./boll (g)	0.1	(0.40)	(0.49)	0.56	(0.65)	(0.88)
Av. Maximum Boll wt. ( g)	0.8	(0.14)	0.5	0.2	0.62	0.396
Cotton yield (Kg /10 sq.m)	0.138	0.125	0.136	0.165	0.098	0.132
Cotton yield (Kg / ac)Assumed 4 harves	55.2	50	55.2	66	39.2	53.12
Gross income(Rs./ac) total yield ( kg / ac )	220.8	200	220.8	264	98.0*	200.7
Gross income(Rs./ac) Rs.2800 / quintal	6182	5600	6182	7392	2744	5620
Addl. Input cost ( Rs./ac )	1370	1370	1370	1370	1370	1370
Net income ( Rs./ac )	4812	4230	4812	6022	1374	4250
C:B Ratio	1:3.51	1:3.09	1:3.51	1:4.40	1:1.003	1:3.10

Comments : Clear increase in plant height, number of branches, number of bolls per plant and seed cotton yield due to application of Stoller products. Mean increase in seed cotton yield in a single picking was 53.12 kg per acre.









# Effect of Stoller Products on Maize



Photo Comment : Significant improvement in cob length and grain filling in the treated plot.



Farmer No:001 Farmer:B.Laxma Reddy Villaga : Tadwai, District: Nizamabad Treated with: Nitro Plus + Sugar Mover			
Parameter	Treated	Control	Benefit
Av. cob length (cm)	18.8	16.9	1.9
Av.no. of seed rows	15	12	3
Grain / cob	648	580	60
100 grain wt.(g)	29.34	28.26	1.08
Yield ( t / ac)	3.55	2.78	0.77
Addl. Cost ( Rs. / ac)	560		
Addl. Income(Rs./ ac)	4060		
C:B ratio	1:7.25		

Comment : Treatment Effect reflected in grain per cob and grain weight resulting in increased in grain yield

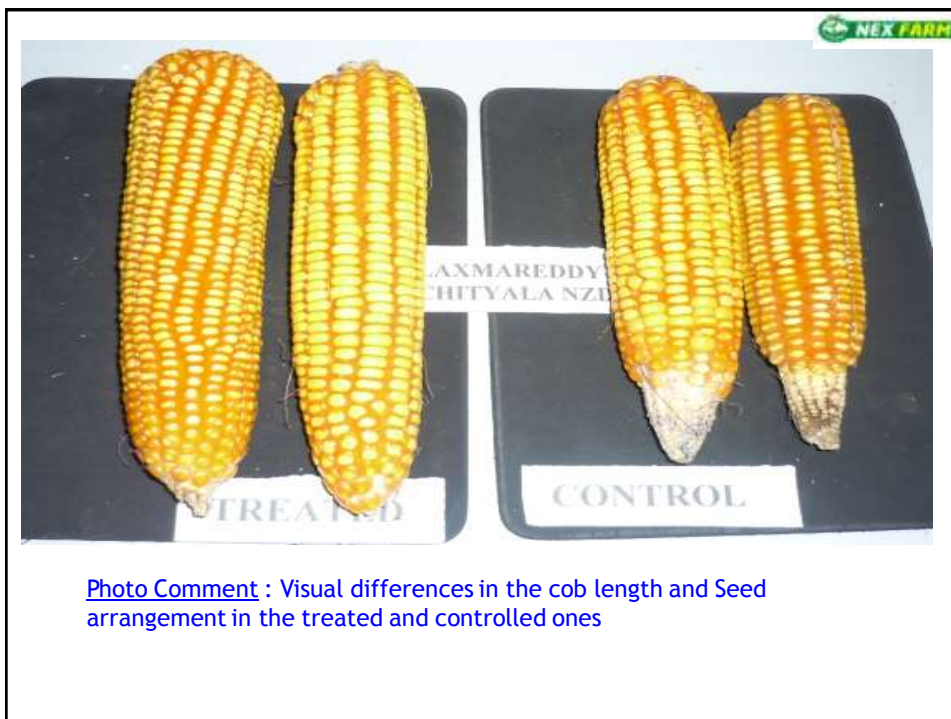


Photo Comment : Visual differences in the cob length and Seed arrangement in the treated and controlled ones

Happy Farmer with his Standing maize crop treated with Stoller products



Photo Comment: Stoller product treated maize crop remained standing and green while the control plot drayed up early and lodged

Treated Un Treated



Photo Comment : Treated Maize plant remained green with a bold tassel till the end of its life cycle while Un treated plant dried up with a weak tassel.

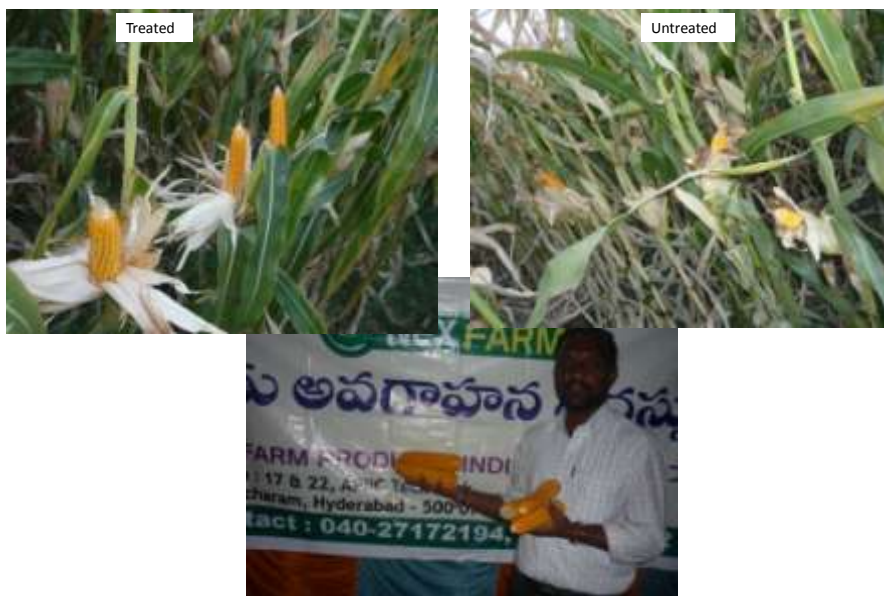
### Summary data table on Maize results

#### Increase in treated plots over control plots

Parameter	F-001	F-002	F-003	F-004	F-005	Mean
Av. cob length (cm)	1.0	1.2	1.90	0.8	1.0	1.18
Av.no. of seed rows	2.0	2.0	3.0	1.0	0	1.6
Av. grain / cob	136	-35	68.0	100	5.0	54.8
Grain wt./ cob (g)	37	30	75.7	26.1	10.3	35.82
100 seed wt. (g)	-1.21	3.68	1.08	-2.13	1.71	0.63
Grain yield (Kg / sq.m)	0.2	0.17	0.18	0.16	0.05	0.15
Grain yield (T/ac)	0.51	0.67	0.77	0.75	0.22	0.58
Addl. Cost (Rs./ac)	560	560	560	560	560	560
Addl. Income (Rs/ac)	2500	3460	4060	3940	760	2944
C:B ratio	1:4.46	1:6.18	1:7.25	1:7.04	1:1.36	1:5.26

**Comment :** Application of Stoller products resulted in higher productivity of maize and recorded very attractive cost benefit ratio. Increase in yield happened due to increase grain per cob either through increase in cob length or increase in seed rows and also grain weight.

#### Effect of Nex farm products on rabi maize





# Effect Of Stoller products on Sugarcane

## Sugarcane

Farmer: Mr Satyanarayana Chowdary

Village: Yadapalli

Dist: Nizamabad

Nitroplus (3 ml/l water) & Sugarmover (3 ml/l water) applied

Untreated



Treated





Data on sugarcane

Parameter	Treated	Untreated	Advantage
Length of Cane (cm)	194.4	163.3	31.1
No. of tillers	3.4	2.02	1.38
No.of nodes	9	6	3.0
Wt. of cane/10 m <sup>2</sup> (kg)	99.6	88.7	10.9
Wt.of 2 canes (kg)	8.3	7.1	1.2
Yield/Ac (tonnes)	40.23	35.83	4.40
Addl.income (Rs/ac)	@Rs.2000/t	-	8800
Addl. Cost of input (Rs)	800	-	800
C:B ratio	-	-	1:10

## Sugarcane

Farmer: Mr Gopala Krishna (IG)

Village: Yerravalli, Mandal : Vikarabad

Dist: Rangareddy

White Lable Zn (3 ml/l water) Nitroplus (3 ml/l water) & Sugarmover (3 ml/l water) applied

Crop sold as seed material

Parameter	Treated	Untreated	Advantage
Yield/Ac (tonnes)	40.6	39.2	1.4
Addl.income (Rs/ac)	@Rs.2000/t	-	2800
Addl. Cost of input (Rs)	925	-	925
C:B ratio	-	-	1:3.02

## Effect of Stoller Products on Chillies

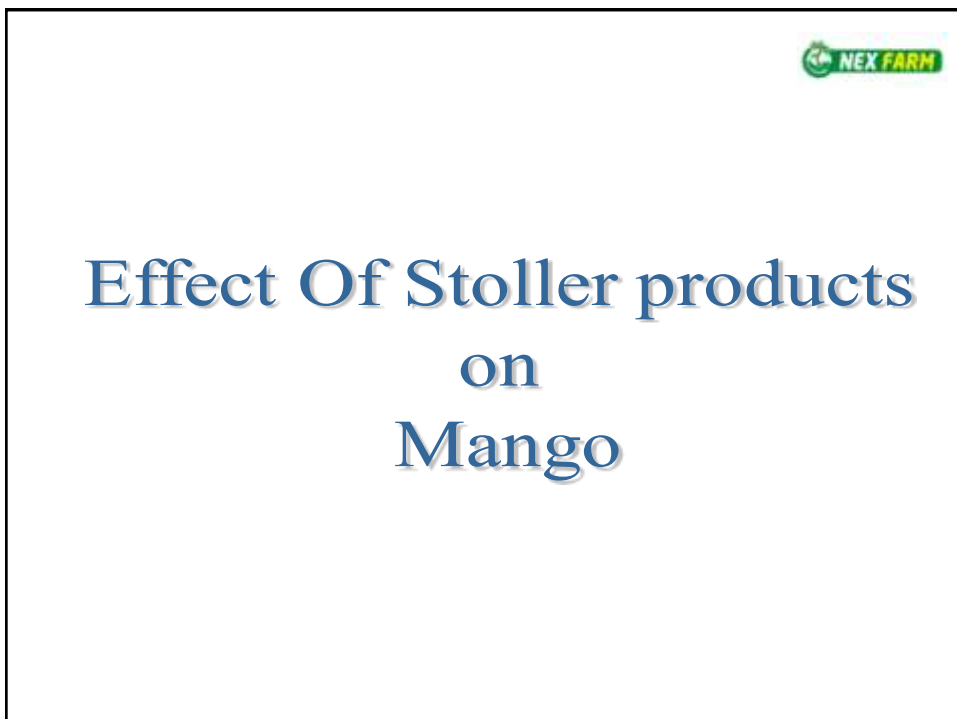




### Harvested Results

S.No	Character	Treated	Control	Advantage
1	1 <sup>st</sup> pick yield ( Kg /12.5 sq.m)	4.70	5.00	0.300
2	2 <sup>nd</sup> pick yield( Kg /12.5 sq.m)	10.54	8.71	1.83
3	1 <sup>st</sup> pick yield ( Kg /12.5 sq.m)	10.21	11.17	0.96
4	1 <sup>st</sup> pick yield ( Kg /12.5 sq.m)	7.66	6.28	1.38
5	Total yield ( Kg /12.5 sq.m)	33.11	31.16	1.95
6	Sundry yld. ( Kg /12.5 sq.m)	9.930	9.348	0.582
7	Sun dry yield ( kg / ac )	3209	3021	188
8	Addl. Income ( Rs. Ac ) @ Rs. 50 / kg			9400
9	Addl. Input cost(Rs./ac)			1200
10	Net income (Rs. /ac )			8200
11	C:B Ratio			1: 6.83

Note: Last (5<sup>th</sup>) harvest was disturbed by hailstorm ,could not be recorded separately and not added to total yield.





## Results

Trees	Parameters	Treated	Control	Advantage
Tree 1	No. of fruits	34	29	5
	Wt. of fruits ( Kg)	9.800	7.680	2.12
	Wt of single fruit(g)	288	264.8	23.2
Tree 2	No. of fruits	36	28	8
	Wt. of fruits ( Kg)	10.300	7.560	2.74
	Wt of single fruit(g)	286	270	16.00
Mean of two trees	No. of fruits	35.0	28.5	6.5
	Wt. of fruits ( Kg)	10.05	7.62	2.43
	Wt of single fruit(g)	287	267.4	19.6
	Addl. income @ Rs25/kg	262.5	190.5	60.75
	Input cost(Rs./ tree)			29.00
	C:B Ratio			1:2.09

Note: There was fruit drop at different times due to heavy winds which could not be accounted for.



# Effect Of Stoller products on Sweet corn

Name of the Farmer: Bheem Reddy Village: Kothagadi, District: Ranga Reddy Crop : Sweet corn		
Inputs applied (Kg/ac)	Treated	UnTreated
DAP	150 kg / ac	150 kg / ac
Urea	----	90 kg / ac
MOP	---	120 kg / ha
Nitro Plus	300 ml / ac	-
Sugar Mover	400 ml / ac	.....
Yield characters	Treated	Untreated
Sample area (sq.m)	43.2	43.2
No. of plants	204	235
Av. Wt of cob* (g)	421.6	340.4
Av. Length of cob* (cm)	20.3	17.9
Av. Seed per cob*	720	640
Cob yield/43.2 sqm (kg)	86	80
Cob yield per acre (kg)	8043	7482
Economics		
Price of cobs (Rs /kg)	12	12
Gross income (Rs/ac)	96516	89784
Input expenditure (Rs/ac)	2062	2592
Net income (Rs/ac)	94554	87192
Net Additional income (Rs/ac)	7362	
C.B ratio	1.0:12.27	

## Cobs from Untreated & Treated plants



Photo Comment : Fully packed with well arranged seed rows and uniformed grain in the treated one.

Farmer Name : N. Mohan Reddy



Village : Kothagadi, Mandal : Vikarabad, District : R .R

Crop : Sweet Corn

Nitro Plus applied at 40 days @ 300 ml/ac, Sugar Mover applied at 52 days @ 400 ml/ac

Yield Characters	Treated	Untreated
Average Weight of a cob(g)	510	406
Average Cob length (cm)	19.88	18.9
Average no. of seed per cob	711	648
Green cob yield in 25 cents (q)	26.94	24
Green cob yield per acre (t)	10.8	9.6
Yield increase in treated plot (t)	1.2	
Economics		
Market price of green cobs (Rs / t)	12000	
Gross Income per acre(Rs)	1,29,600	1,15,200
Addl. gross income (Rs)	14400	
Cost of the products applied (Rs /ac)	600	
Addl. handling charges (Rs)	600	
Addi. Expences due to treatment (RS)	1200	
Net additional income /acre (Rs)	13200	
C. B Ratio	1:11.0	







### Effect of Nex Farm products on Sweet corn

Farmer: N. Mohan Reddy, Kothagadi, Vikarabad  
 Season: Winter, 2009-10  
 Treatments: Seed treatment with Bio Forge, NP, and SM

Treatment	Treated	Control	Advantage	Input cost	Addl. income	Adl. Net Income	C:B Ratio
	Average green cob ( with calyx cover) weight ( g )			-	-	-	-
Control( Farmer's way ) +SM	733	692	41	-	-	-	-
Seed treatment with Bio Forge	827	692	135	-	-	-	-
Seed treatment + NP +SM	891	692	199	-	-	-	-
	Green cob yield ( kg / ac )			-	-	-	-
Control( Farmer's way ) +SM	8226	7766	460	350 /ac	4600	4250	1:12.14
Seed treatment with Bio Forge	8800	7766	1034	150 /ac	10340	10,190	1: 67.9
Seed treatment + NP +SM	10000	7766	2234	700 /ac	22340	21,640	1:30.9
For computing Income, price of green cobs taken as Rs. 10 / kg at wholesale level.							



## Effect Of Stoller products on Groundnut

Crop : Ground Nut  
 Name of the farmer: Bihari lal  
 Village & mandal : Basheerabad  
 Dist : Rangareddy



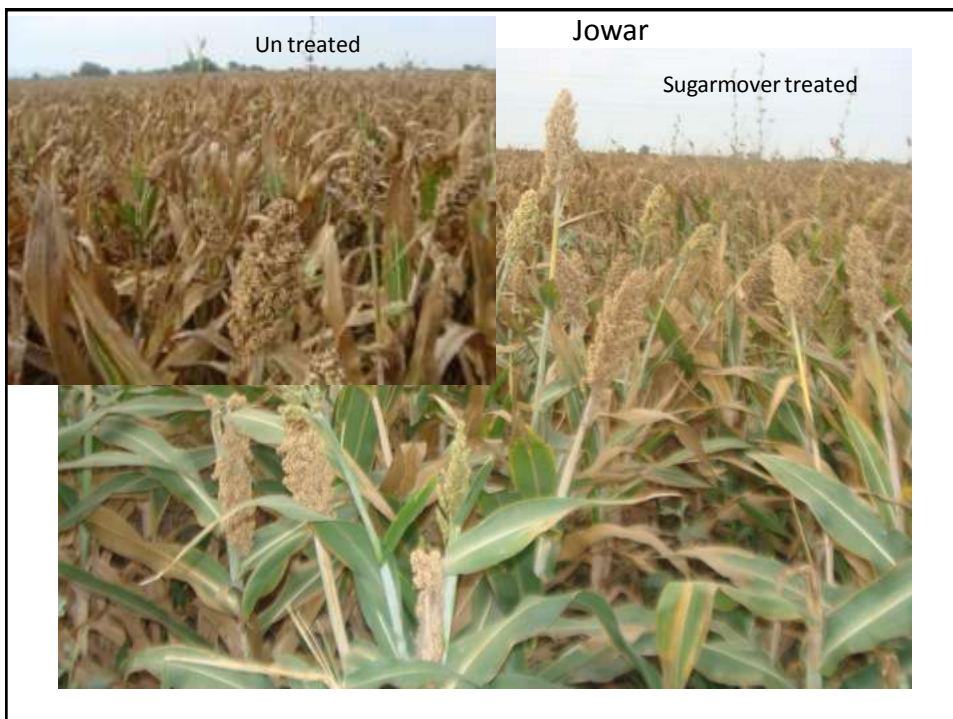
Rainfed Groundnut applied with Sugar Mover at pegging stage

### Harvested Results

Parameter	Treated	Control	Advantage
Fresh pod weight ( g / sq.m )	857.4	838.0	19.4
Sun dried Moisture %	66.0	58.4	7.6
Dry weight ( sun dried) g/ sq.m	535.6	508.6	27.0
Dry weight of pods ( kg / ac )	2164	2054	110
Additional expenditure ( Rs / Ac)		nil	250
Additional income ( Rs / Ac)		nil	2200
Net additional income ( Rs. / ac)		nil	1950
Cost Benefit Ratio		nil	1.0:7.8



# Effect Of Stoller products on Jowar



Farmer: Appa Rao  
 Village: Narkatpally, Nalgonda Dt.  
 Crop: Rabi-fed rabi Jowar, 2009-10

S.No	Character	Treated	Control	Advantage
1	Avg plant height (cm)	175	170	5.0
2	Avg length of ear head (cm)	21.8	20.4	1.4
3	Wt of Grain (kg / sq m)	1.11	1.04	0.07
4	500 grain wt (gm)	14.8	15.8	-1.0
5	No of grain /head	2486	2198	288
6	Yield of Grain ( kg / ac)	2045	1940	105
7	Additional yield ( kg / ac)	105	-	105
8	Add. expenditure (Rs. / ac)	-	-	250
9	Add. income ( Rs. / ac)	-	-	1260
10	Add. net income (Rs. /ac)	-	-	1010
11	Cost Benefit Ratio	-	-	1.0 : 4. 04

### Effect of Stoller products on Safflower

Farmer: Narasimha Reddy  
 Village: Navalga, Basheerabad, (Tandoor), Ranga Reddy dist.  
 Season: Rabi 2009-10  
 Products: Only Sugar Mover  
 Crop: Safflower

Parameters	Treated	Control	Advantage
Yield (g/ sq.m)	235	160	75
Yield (kg/ ac)	949.4	646.4	303
Incom, @Rs.18000/t	17,089	11,635	5,454
Input cost( Rs./ac)	400	--	400
Net income(Rs./ac)	--	--	5,054
C:B Ratio	--	--	1:12.63

### Impact of Stoller products on Soybean

Farmer : V satyanarayana  
Village : Bodhan  
Dist : Nizamabad

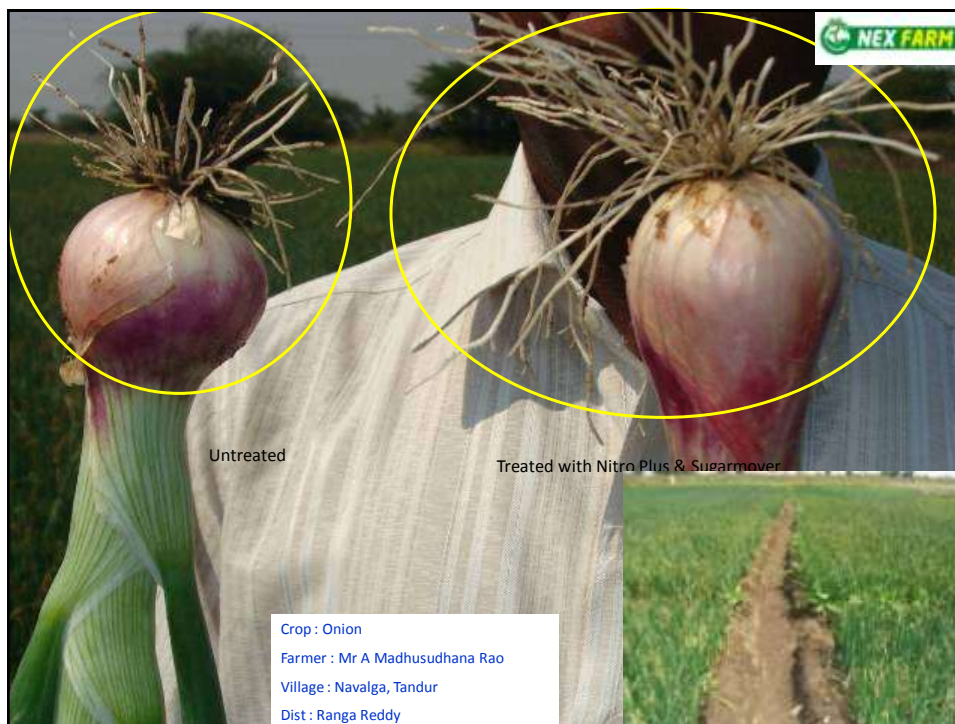


## Effect Of Stoller products on Vegetables



Farmer Name : Malla Reddy, Mandal : Shanker Palli, District : R .R Nitroplus applied at 40 days @ 400 ml/ac, Sugar Mover applied at 52 days @ 400 ml/ac			
Parameter	Treated	control	Difference
Planting space	100 x 100 cm	100 x 100 cm	----
1st pick yield ( kg / 3 plants)	2.05	1.31	0.74
Yield kg / 100 sq.m	205	131	74
Deducting 20% Sampling error ( kg)	164	104.8	59.2
Yield in one pick( t / ac. )	6.56	4.2	2.36
Yield in assumed 5 picks ( t / ac )	25.96	17.24	8.72
Loss in weight ( 10%)	23.36	15.52	7.84
Market value(Rs./ac)Price @ Rs. 8000/t	186880	124160	62720
Addl. costs ( Rs./ ac)Product input cost	522	--	522
Extra picking cost@ Rs.1.0 /kg	7840	--	7840
Addl. Transport and Handling (Rs.0.50/kg)	00:00.0	--	3920
Total cost. Addl.	12282	--	12282
Net income ( Rs. / ac)	174598	124160	50438
C:BRatio	--	--	1:4.11





## Results

Parameters	Treated	Control	Advantage
Yield (kg/ sq.m)	6.40	6.00	0.40
Yield (kg/ ac)	25,856	24,240	1,616
Incom, @Rs.3500/t	90,496	84,840	5,656
Input cost( Rs./ac)	500	---	500
Net income(Rs./ac)	--	--	5,156
C:B Ratio	--	--	1: 10.31



Farmer: Samba Reddy, Kommala, Warangal Dist.  
 Season: Kharif, 2009 continued till Feb. 2010  
 Products: NP, SM, NP, SM, Fruit power

### Tomato



### Results

Character	Treated	Control	Advantage
1 <sup>st</sup> pick fruit yield ( kg / sq.m)	3.500	2.140	1.36
1 <sup>st</sup> pick fruit yield ( kg / sq.m)	3.880	2.240	1.64
1 <sup>st</sup> pick fruit yield ( kg / sq.m)	4.080	3.100	0.98
1 <sup>st</sup> pick fruit yield ( kg / sq.m)	3.800	2.680	1.12
1 <sup>st</sup> pick fruit yield ( kg / sq.m)	3.080	2.560	0.52
Total 5 <sup>th</sup> pick yield ( kg / sq.m )	18.340	12.720	5.62
Total 5 pick yield ( kg / ac )	74,094	51,389	22,705
Addl. income (Rs./ac) @ Rs. 2.00 / kg	--	---	45410
Addl. input cost ( Rs / ac )	--	---	1200
Net income ( Rs. /ac)	---	---	44210
C:B ratio	--	--	1: 368



Crop	Character	Treated	Control	advantage
Bhendi	Pl. ht.(cm)	80	40	40
	Fruits/sq.m	17.2	10.4	6.8
	Fruit wt(g/sq.m)	277	148	129
	Av.fruit wt.(g)	16.09	14.23	1.86
Cucumber				
	Average fruit wt.(g)	384	284	100
Ridgegourd				
	Average fruit wt(g)	167.2	108.0	59.2

## Impact of Stoller products on Brinjal

Farmer: Veeresham  
 Village: Gundupally, R.R.Dist.  
 Season: Kharif,2009  
 Crop: Brinjal

Picks	Character	Treated	Control	advantage
1st pick	Kg / 0.25 ac	88.0	82.2	5.8
2 <sup>nd</sup> pick	Kg / 0.25 ac	108.4	91.0	17.4
Total	Kg / 0.25 ac	196.4	173.2	23.2
Yield in 2 picks	Kg / ac	785.6	692.8	92.8
Minimum of 6 picks	Assumed ( kg/ac in 6 picks)	2356	2078	278
Income	Rs. / ac ( @ Rs.4.0 / kg)	11,780	10,390	1390
Input cost	Rs. / ac / only S M	400	---	400
Net income	Rs. / ac			990
C : B Ratio	-----	-----	-----	1: 2.48



Bengalgram (Treated with Nitroplus & Sugarmover)



## Effect Of Stoller products on Sweet Orange



